



# E-Series

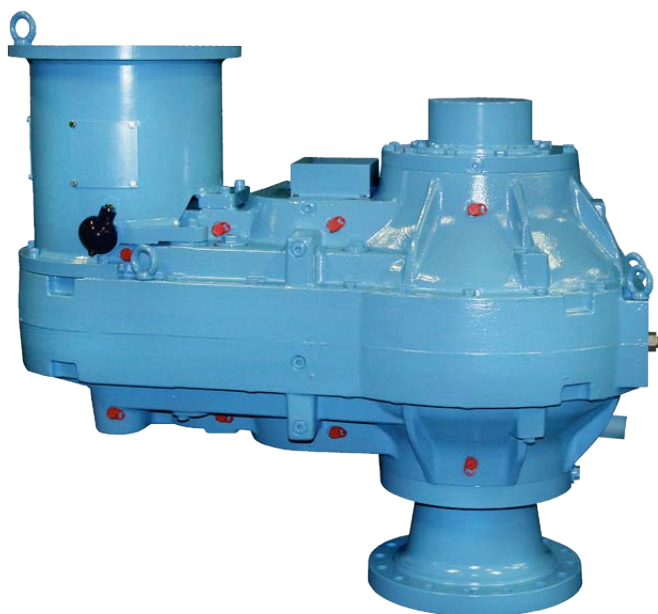
Increased Reliability and Proven Design



# E-Series

# KUMERA E-Series

## Increased Reliability and Proven Design



### The E-series can be equipped with:

- Heating element
- Separate lubrication unit
- Remote condition monitoring:  
Kumera Guar Gear 200

The new E- and SE-series is especially designed for demanding agitator applications in process industry.

The range comprises 15 gear models. Sizes are divided in optimum way to meet required both torque range and ratio requirements.

The maximum output torque is 840 kNm and the maximum ratio is 3550:1.

The range consists of two version options. E-version is being offered as a standard. The parallel SE-model is designed for more demanding applications.

Optimum dimensions for the housing are result of very extensive FEM-analysis.

External radial forces affecting the output shaft extension are specially taken into account when designing the housing and the output shaft and its bearings.

The parts which need to be maintained have been placed in one location to make the service operations faster and easier.

The lubrication of the bearings is always done with filtered oil to guarantee trouble free operation and maximum life time of bearings.

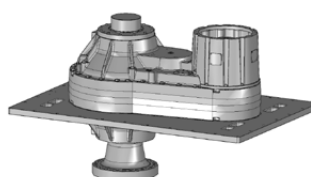
Pressure lubrication system is covering all bearings. The oil nozzles can be maintained without dismantling the gearbox.

The output shaft can be equipped with a key way or a fixed flange. When using a output shaft with fixed flange there is no need to have a separate coupling half.

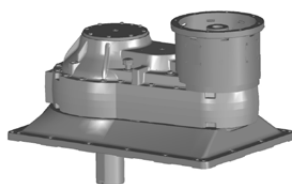
The new E-series has two different foot mounting alternatives. One is casted structure and the other is based on steel plate which can be easily modified according to customer's need.

The sealing options for the output shaft are dry-sump, dry-well or lip seal. Dry-sump sealing is completely service free alternative. Lip seal construction is equipped with leakage oil connections.

According to customer's need the new E-series gearboxes can be delivered completely fitted with additional accessories and compatible with ATEX requirements.



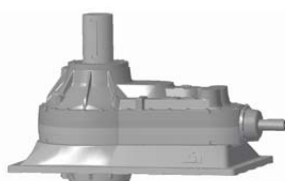
**SEM-gear unit with  
mounting plate**



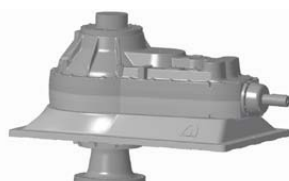
**LEM-gear unit with  
casted mounting foot**



**KE-bevel gear unit with  
mounting foot**



**KE-bevel gear unit with  
casted mounting foot**



**SEK-bevel gear unit with  
casted mounting foot**

| Feature   | Benefits & Values   |
|---|---|
| Mixer gear series with multiple sizes and ratios                    | Large power range of 200 – 1000 kW  |
| Integrated flange coupling and output shaft                         | More rigid and reliable structure   |
| Stronger shaft support by higher bearing span for mixer application | Higher bending load carrying capacity of the output shaft   |
| Forced lubrication of all bearings                                  | Cool, clean and filtered lubricant increase bearing reliability   |
| Customized adapter plate for connection                             | Versatility in final assembly   |
| Special ratios up to 1% of the requested ratio at moderate cost     | Easy to select the optimal gear unit for a specific application value for money   |
| A separate lubrication and cooling unit with an oil tank            | Simple, standard systems for cooling and lubrication  |
| Optimized tooth profiles using latest calculation tools             | Better load distribution and lower dynamic forces reduce stresses and increase gear life                                      |
| Case-hardened gears   | A hard case and through hardened core result in a more wear resistant gear that is capable of handling even high impact loads |





**POWER-PLAZA.COM**

Kumera Power-Plaza is the online market place for Kumera mechanical transmission products and associated spare parts. Power-plaza.com speeds up the process of requesting for quotations. **www.power-plaza.com**

## Other Kumera Drive Units



HELICAL GEAR UNITS,  
COMPACT F-RANGE



HELICAL GEAR UNITS,  
COMPACT G-RANGE



ONE STAGE HELICAL  
GEAR UNITS  
KUMERA LX-RANGE



HEAVY DUTY HELICAL  
GEAR UNITS,  
KUMERA D-RANGE



BEVEL GEAR UNITS,  
COMPACT F-RANGE



BEVEL GEAR UNITS,  
COMPACT G-RANGE



AGITATOR GEAR UNITS,  
SG-RANGE



HEAVY DUTY AGITATOR  
GEAR UNITS,  
E-RANGE



WORM GEAR UNITS,  
COVERA RANGE



COMBINATION HELICAL AND  
WORM GEAR UNITS,  
COVERA RANGE



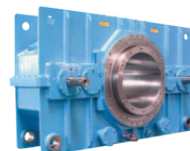
DOUBLE WORM GEAR UNITS,  
COVERA RANGE



WIND UP AND UNWIND  
GEAR UNITS,  
LP-RANGE



ONE STAGE HELICAL  
GEAR UNITS,  
KUMERA LH-RANGE



YANKEE CYLINDER  
GEAR UNITS



SPECIAL GEAR UNITS



BEVEL GEAR UNITS,  
KA-RANGE



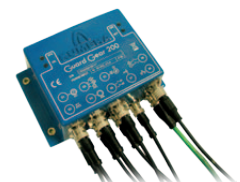
FRONT END GEAR UNITS,  
NORGEAR-RANGE



INTEGRATED ROLL  
GEAR UNITS,  
TP-RANGE



PLANETARY  
GEAR UNITS,  
P-RANGE



CONDITION MONITORING  
GUARD GEAR 200

### KUMERA POWER TRANSMISSION GROUP

#### KUMERA DRIVES OY

Kumerankatu 2  
FI-11100 Riihimäki  
FINLAND  
Tel. +358 20 755 4200  
Fax: +358 20 755 4220  
E-mail: drives@kumera.com

#### KUMERA AS

P.O. Box 2043  
N-3202 Sandefjord  
NORWAY  
Tel. +47 33 48 54 54  
Fax: +47 33 48 54 55  
E-mail: sales@kumera.no

#### KUMERA ANTRIEBSTECHNIK GMBH

Raiffeisenstrasse 38-40  
A-8010 Graz  
AUSTRIA  
Tel. +43 316 471 524-0  
Fax: +43 316 462 550  
E-mail: kumera.graz@kumera.com



#### KUMERA (CHINA) CO., LTD.

168 Meifeng Road  
Kunshan 215300, Jiangsu  
CHINA  
Tel. +86 512 503 61701  
Fax: +86 512 503 61710  
E-mail: kumerachina@kumera.com